

Hygienic IT Workstations for Food Processing



Streamline Manufacturing Processes

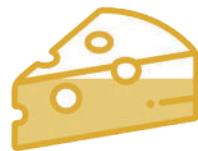


BLUE LINE
IT for Demanding Environments

Fish & Seafood



Dairy Products



Meat & Poultry



Fruit & Vegetables



Beverages



Convenience Food



Reliable Solutions for Food Processing

Blue Line's IT workstations for the food and beverage industry ensure the required hygienic environment. Whether used for uninterrupted traceability, formula checking, weighing, quality assurance or for controlling production, Blue Line workstations guarantee absolute reliability.

WE UNDERSTAND YOUR ENVIRONMENT

Blue Line has been a global supplier of highly reliable IT solutions for demanding environments for more than 35 years. Our DNA is customer focus in all phases of the co-operation. In surveys, the majority of our costumers emphasised Blue Line's ability to listen and to create solutions in close co-operation with our dedicated team.

HIGHER PRODUCTIVITY AND USER SATISFACTION

Benefit from a product range designed to avoid the typical challenges in food and beverage manufacturing. Gain higher productivity and user satisfaction.

QUALITY AND RELIABILITY

All products are designed for 24/7 uptime, with a low power consumption, passive cooling and without moving parts for maximum operational reliability. All company procedures are subject to strict quality standards in the ISO 9001:2015 certification. As a company we also hold an AAA credit rating. In line with our focus on food safety, Blue Line is a company member of EHEDG (European Hygienic & Design Group), which is dedicated to promote hygiene in design and engineering.



A partnership with Blue Line equals



Easy to clean

Benefit from a product range designed to avoid the typical challenges in the food and beverage industry. Avoid worries about safety standards and regulatory requirements with innovative technologies keeping all products completely clean and hygienic.

CORROSION FREE DESIGN

Blue Line's HMIs are crafted from stainless steel available in a fully sealed IP66/IP69K waterproof and high pressure proof design resistant to corrosion caused by cleaning detergents and saline environments.

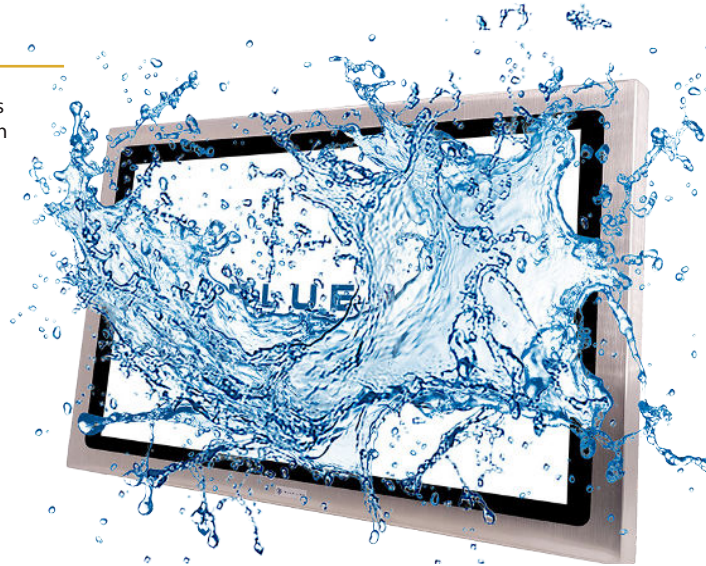
HYGIENIC AND SAFE

All products are consciously designed with smooth surfaces, slanted sides and rounded edges meaning that products are easy to clean. Blue Line's stainless steel products withstand all known cleaning detergents and disinfectants.

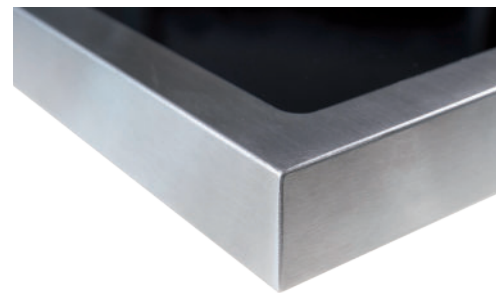
FOOD SAFETY STANDARDS

Take advantage of our extensive experience with HMIs for food and beverage. Some models meet the approval of EN 1672-2 and NFS/ANSI/3-A Food Safety Standards assuring the highest possible level of hygiene and safety.

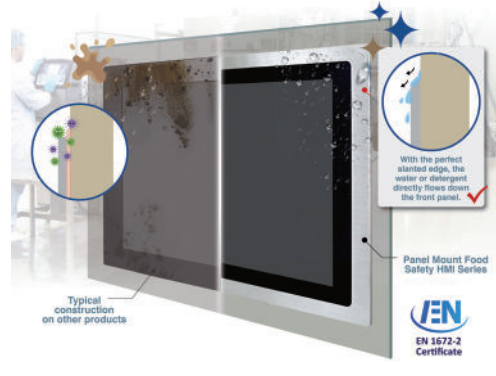
Fully sealed HMIs in water and high pressure proof design



Slanted, rounded edges and smooth surfaces make it easy to clean



Meets Food Safety Standards for hygienic excellence



Easy to use

Increase productivity and user satisfaction with the cutting edge, auto-calibrated touch technology that works with gloves. Blue Line's HMI workstations are very easy to use.

OPERABLE WITH GLOVES

Blue Line HMIs support operation with gloves. Operators can easily enter and retrieve data.

AVOID CONDENSATION

All HMI workstations can be optical bonded, which provides better image quality, greater tensile strength and prevent condensation.

AUTO-CALIBRATED TOUCH TECHNOLOGY

Benefit from auto calibrated touch displays for seamless operation and avoids interruptions in the production process.

HYGIENIC KEYBOARD

Standard keyboards are not suitable for use in hygienic

production environment and most keyboards do not permit regular cleaning with aggressive agents. Blue Line's hygienic keyboards are effectively disinfectable with no compromises. Furthermore, the keyboards are robust, durable and with an ergonomic design easy to use, also with protective gloves.

Auto-calibrated touch technology operable with gloves



Hygienic keyboard. Water and dust proof. Highly durable



Easy to implement

An optimal implementation is an important part of the solution. Blue Line provides a wide range of flexible mounting solutions regardless of whether the mounting is to be on the machine, integrated in the machine or a control cabinet, on the floor, ceiling or as a desktop. Installations can be fixed, rotating and tiltable. Keyboards can be a part of the system solution.

SMOOTH, CLEANABLE AND PROTECTED

The mounting solutions are designed to ensure shielded assembly of the individual units making cleaning easy and avoiding water and particles to ingress. All workstations are made entirely of stainless steel withstanding tough cleaning procedures.

Benefit from a tube mount solution protecting both the

connectors on the back and hiding the cabling. This double shielding of the connectors and cables improves reliability, especially when exposed to high pressure cleaning.

Based on your specific needs, we would be pleased to prepare a proposal for a system/solution that ensures optimum functionality and ergonomics, plus occupies minimal space.

INNOVATIVE AND TRUE FLAT

Improve the hygiene with Blue Line true flat monitors with projected capacitive touch operable with gloves. Integrated in machines or control cabinets, the flat front and foil will provide both an elegant look and sealing ensuring that no unwanted particles can accumulate.

Easy Integration of HMIs on the process equipment



Wall or machine mounting with optional tilt and swivel



Integration of HMI in control cabinet or machine



Desktop workstation for hygienic environments



Ceiling mounting with hidden cables and connectors



Pedestal mounting with hidden cables and connectors



Wall mounting of HMI and keyboard - with bracket for scanner



Pipe mounting e.g. in machine - with hidden connectors and cables



Tube mounting - ceiling or pedestal



Modular Design – Built to Your Needs

Blue Line's modular design makes it possible to configure HMI workstations to specific requirements in functionality, finish and environment.

Choose between different variants of casing, size, input, communication and mounting. Discover the possibilities in the illustration below.

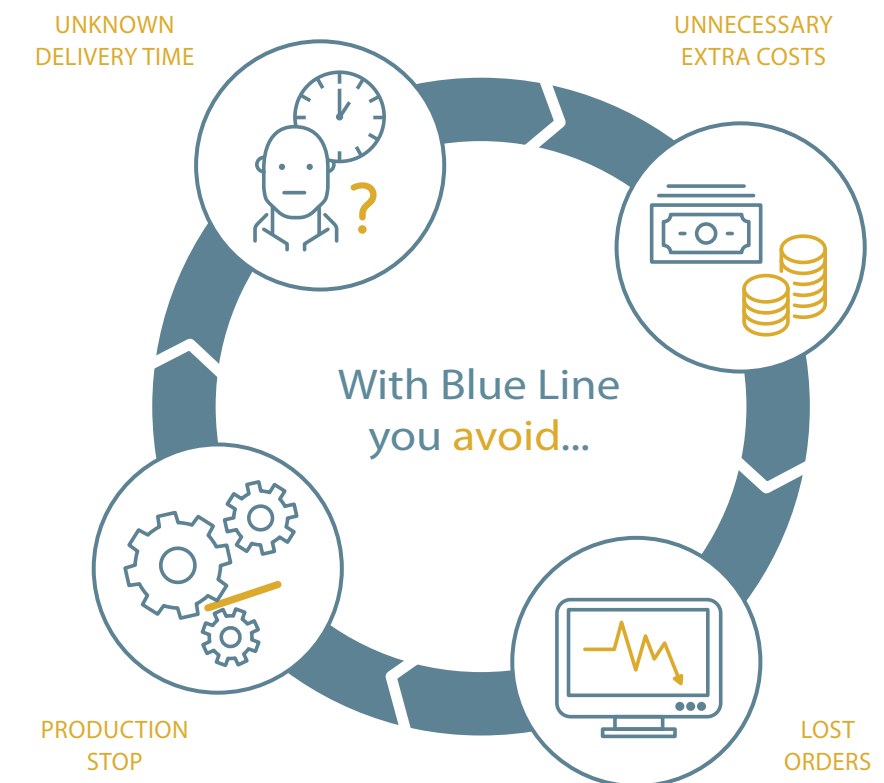
If you do not find a combination that fits your requirements, Blue Line has a strong capability to customise products according to your specifications.

Meet all functional requirements and compliance with current infrastructure choosing Blue Line's modular and configurable platforms.



Secure your delivery schedule at Blue Line

At Blue Line, we know what good delivery planning and transparency mean for our customers. Therefore, we have built strategic and long-term partnerships with our subcontractors to ensure our customers the optimal delivery conditions.



TOGETHER WE PLAN YOUR DELIVERY
Blue Line's ultimate goal is to help our customers get peace of mind by handling all details such as securing the right configuration, software setup, packaging, labeling etc.

We work closely with the individual customer based on the specific needs and challenges. Blue Line creates an overview of the long-term

business goals and prepares plans that ensure deliveries on time at the agreed price and in the agreed quality.

CLEAR COMMUNICATION AND TRANSPARENCY
Continuous dialogue and follow-up are the keys to good cooperation - especially in tumultuous market situations where unforeseen events can occur.

Blue Line takes responsibility for the entire delivery process and ensures open and honest communication with our customers, so that together we can find the best solution to any challenge.

Blue Line has many customer collaborations spanning many years. Customers who are satisfied and happy with our close business cooperation.

Product overview

HMI, Industrial PCs and Keyboards for food and beverage production. Blue Line's modular design makes it possible to configure to specific needs in functionality, finish and environment.

HMI SYSTEMS FOR FIXED MOUNTING



HMI OPERATOR PANEL

HMI 7500

HMI 7700

MOUNTING SYSTEMS



Examples of mounting systems
Further options available

DESKTOP WORKSTATION



Example of desktop system
Further options available

HMI SYSTEMS FOR IN-WALL MOUNTING AND INTEGRATION



Flex HMI-1100

HMI 6700

HMI 7200

HMI for Integration



Examples of integration
Further options available

INDUSTRIAL PCS



Examples of Industrial PCs
Further models available




KEYBOARD





Example of keyboard
Further options available

Product Specifications

HMI FOR FIXED MOUNTING

PRODUCT	HMI OPERATOR PANEL SERIES IP69K		HMI 7500 SERIES IP69K	HMI 7700 SERIES IP69K
<div></div>				
Model				
Type	Thin Client, Panel PC		Monitor, Thin Client, Panel PC	
Construction	Fully sealed enclosure in stainless steel AISI 316L		Fully sealed enclosure in stainless steel AISI 304 or 316L	
Cooling	Fanless			
Ingress Protection	IP66/IP69K			
Display	13.3": 1920 x 1080 16:9, FHD 21.5": 1920 x 1080 16:9, FHD		10.1": 1280 x 800, 16:10, WXGA 12.1": 800 x 600, 4:3, SVGA (option for 1024 x 768) 15": 1024 x 768, 4:3, XGA 15.6": 1366 x 768, 16:9, HD (option for 1920 x 1080) 17", 19": 1280 x 1024, 5:4, SXGA 21.5", 24": 1920 x 1080, 16:9, FHD	
Touch Type	Projected capacitive multi touch (support gloves) Optical bonding		Projected capacitive multi touch (support gloves), Resistive touch(optional), No touch(optional), Optical bonding (optional)	
Monitor				
I/O		1 x M12 VGA 12pin Cable, 1 x HDMI, 1 x M12 USB touch, 1 x power input		1 x HDMI, 1 x 3pin DC power, 1 x USB-touch, 1 x M4 ground screw
Thin Client				
ThinManager, Microsoft Remote Desktop (RPD), NoTouch OS, VNC, Citrix, VMware and others				
Panel PC				
Processor and RAM		Intel Atom Bay Trail E3845 quad core, 1.9GHz, 8GB		10.1" to 24": Intel Celeron N2930 1.83GHz, 4/8GB 15" to 24": Intel Core i3-6100U 2.3GHz, 4 to 16GB Intel Core i5-6300U 2.4GHz, 4 to 16GB
I/O		2 x GbE LAN 1 x USB 2.0 connector 1 x M12 3pin DC power 1 x M4 ground screw		1 x M12 8pin for LAN 1 x M12 8pin for 2 x USB 2.0 (Option for USB 3.0) 1 x M12 3pin for DC power 1 x M12 8pin for COM1/RS-232/422/485 1 x Power switch
Expansion		1 x MiniPCle slot		2 x GbE RJ45 connectors 1 x USB 2.0 connector 1 x M12 3pin DC power 1 x M4 ground screw
Operating System		Windows 7 / 8 / 10 Windows Embedded Standard 7 / 8 Windows 10 IoT Enterprise Linux		
Storage		1 x 2.5" HDD / SSD 1 x mSATA		1 x 2.5" SATA HDD / SSD
Power Supply		+9V to +36V DC-in by M12 3-pin		
Power Consumption		Max 30W		Max 42W
Dimension and Weight		13.3" H 286 x W 415 x D 45mm, app. 6kg 21.5" H 404 x W 613 x D 45mm, app. 11.8kg		Please refer to our web: www.blue-line.com 15.6": H 290 x W 440 x D 55mm, app. 7.2kg 21.5": H 362 x W 656 x D 55mm, app. 10kg
Certification		CE / FCC CLASS A		
Mounting		VESA 100 (I/O ports in center) Stainless steel tube / wall / pipe / supporting arm		10.1" to 17": VESA 75 19" and 21.5": VESA 100 24": VESA 200 x 100 VESA 100 (I/O ports in center) Stainless steel tube / supporting arm
Warranty and After Sales Support		Standard 1 year (option for 3 years)		

HMI FOR FIXED MOUNTING

PRODUCT		FLEX HMI MONITOR-1100		FLEX HMI PANEL PC-1100	
					
Model					
Type	Monitor, Thin Client, Panel PC				
Construction	Aluminum bezel				
Cooling	Fanless				
Ingress Protection	Front IP66 - Rear IP5X				
Display	7": 800 x 480, 5:3, WVGA 8": 800 x 600, 4:3, SVGA 10.1": 1280 x 800, 8:5, WXGA 12.1": 800 x 600, 4:3, SVGA (option for 1024 x 768) 15": 1024 x 768, 4:3, XGA 15.6": 1366 x 768, 16:9, HD (option for 1920 x 1080) 17": 1280 x 1024, 5:4, SXGA 18.5": 1366 x 768, 16:9, HD (option for 1920 x 1080) 19": 1280 x 1024, 5:4, SXGA 21.5", 32": 1920 x 1080, 16:9, FHD				
Touch Type	Projected capacitive multi touch (support gloves), Resistive touch(optional)				
Monitor					
I/O	1 x USB type B for touch (1 x RS-232 optional) 1 x VGA, 1 x DVI-D, 1 x HDMI, 1 x DP 1 x Audio line-in phone jack 1 x 3-pin DC power input terminal (32" AC input) OSD Control Membrane				
Thin Client					
ThinManager, Microsoft Remote Desktop (RPD), NoTouch OS, VNC, Citrix, VMware and others					
Panel PC					
Processor and RAM	7" to 32": Intel Pentium N4200 4C/4T 1.1GHz (Turbo 2.5GHz), 4/8GB 12.1" to 32": Intel 8th Gen. Core i3-8145UE 2C/4T 2.2GHz (Turbo 3.9GHz), 32GB Option for i5-8365UE 4C/8T 1.6GHz (Turbo 4.1GHz), 32GB				
I/O	Pentium N4200: 2 x USB 3.0 type A, 1 x RS-232/422/485 by DB9, 1 x RS-232 by DB9, 2 x GbE LAN RJ-45 Port, 1 x line out, 1 x 3-pin DC power input terminal (32" AC input), 1 x 2-pin connector for power on/ off button Core i3 / i5: 4 x USB 3.0 type A, 1 x RS-232 by DB9, 1 x displayport, 2 x GbE LAN RJ-45 port, 1 x line out, 1 x 3-pin DC power input terminal (32" AC input), 1 x 2-pin connector for power on/ off button				
Expansion	1 x Internal full size Mini PCIe slot Pentium N4200: Internal SIM Card holder Core i3 / i5: Internal Nano SIM Card holder				
Operating System	Windows 10 / 11, Windows 10 IoT Enterprise, Linux				
Storage	Pentium N4200 7" to 8": 1 x 1.8" SATA3 SSD and Micro SD card reader Pentium N4200 10.1" to 32": 1 x 2.5" SATA3 SSD and Micro SD card reader Core i3 / i5 12.1" to 32": 1 x M.2 M-Key slot (Support PCIe/SATA 2242/2280)				
Power Supply	7" to 23.8": +9 to +36V DC-in by terminal block 32": +90 to 264V AC input				
Power Consumption	4W to 47W (Max) Pentium N4200: 26W to 50W (Max) Core i3 / i5: 47W to 80W (Max)				
Dimension and Weight	Please refer to our web: www.blue-line.com				
Certification	CE / FCC CLASS A				
Mounting	7" to 8": Panel mounting / VESA 75, 10" to 21.5": Panel mounting / VESA 100, 32": Panel mounting / VESA 200				
Warranty and After Sales Support	Standard 1 year (option for 3 years)				

HMI FOR INTEGRATION

PRODUCT	HMI 6700 SERIES	HMI 7200 SERIES	HMI FOR INTEGRATION
---------	-----------------	-----------------	---------------------



Model			
Type	Thin Client, Panel PC	Monitor, Thin Client, Panel PC	Monitor
Construction	Front bezel in aluminium or stainless steel AISI 304 or 316L	Front bezel in stainless steel AISI 304 or 316L	Glass front - metal rear housing
Cooling	Fanless with Celeron N2930 CPU Active fan with Core i3 / i5 / i7	Fanless	Fanless from 5.7" to 27" Active fan from 32" to 85"
Ingress Protection	Front IP66 (option for front IP69K)	Front IP66/69K	Front IP65 with front folie sealing
Display	15": 1024 x 768, 4:3, XGA 15.6": 1366 x 768, 16:9, HD (option for 1920 x 1080) 17": 1280 x 1024, 5:4, SXGA 21.5": 1920 x 1080, 16:9, FHD	7": 800 x 480, 5:3, WVGA 10.1": 1280 x 800, 16:10, WXGA 12.1": 800 x 600, 4:3, SVGA (option for 1024 x 768) 15": 1024 x 768, 4:3, SVGA 15.6": 1366 x 768, 16:9, HD (option for 1920 x 1080) 17", 19": 1280 x 1024, 5:4, SXGA 21.5": 1920 x 1080, 16:9, FHD	Sizes ranging from 5.7" to 85" with resolution from 640 x 480 and up to 3840 x 2160
Touch Type	Projected capacitive multi touch (support gloves), Resistive touch(optional), No touch(optional), Optical bonding (optional)		

Monitor			
I/O	1 x USB type B for touch (option 1 x RS-232), 1 x VGA, 1 x DVI-D, 1 x HDMI, 1 x DP, 1 x Audio line-in phone jack, 1 x 3-pin DC power input terminal	1 x VGA, option for HDMI / display port / DVI, 1 x USB 2.0 touch, OSD control panel	

Thin Client	
ThinManager, Microsoft Remote Desktop (RPD), NoTouch OS, VNC, Citrix, VMware and others	

Panel PC			
Processor and RAM	Intel Celeron N2930 1.83GHz, 4/8GB Intel Core i3-6th / 7th, up to 32GB Intel Core i5-6th / 7th, up to 32GB Intel Core i7-6th / 7th, up to 32GB	Intel Celeron N2930 1.83GHz, 4/8GB Intel Core i3-6100U 2.3GHz, 4 to 16GB Intel Core i5-6300U 2.4GHz, 4 to 16GB	
I/O	Please refer to our web: www.blue-line.com		
Expansion	1 x Full-size Mini PCIe on board 1 x Half-size Mini PCIe on board 1 x SIM slot for option(option WIFI/Bluetooth/4G) 1 x PCIe x1 and 1 x PCIe x16 slot via riser or 1 x PCI and 1 x PCIe x1 slot via riser	1 x Mini PCIe slot	
Operating System	Windows 7 / 8 / 10 Windows Embedded Standard 7 / 8 Windows 10 IoT Enterprise Linux		
Storage	2 x 2.5" SATA SSD/HDD space (support RAID 0, 1, 5) for Intel Core i3 / i5 / i7 1 x 2.5" SATA SSD/HDD Space for Intel Celeron	7": 1 x slim 1.8" SSD, 1 x internal SD slot 10.1": 1 x 2.5" SATA SSD / HDD, 1 x internal SD slot 12", 15", 17", 19", 21.5": 1 x 2.5" SATA SSD / HDD	
Power Supply	+9V to +36V DC-in by terminal block		AC input or DC input
Dimension and Weight	Please refer to our web: www.blue-line.com		
Certification	CE / FCC CLASS A		CE
Mounting	Panel Mount	7": Panel mount / VESA 75 10" - 21.5": Panel mount / VESA 100	In-wall / rear mount
Warranty and After Sales Support	Standard 1 year (option for 3 years)		

INDUSTRIAL PC

PRODUCT	INDUSTRIAL PC-2600 DIN RAIL MODEL 1	INDUSTRIAL PC-2600 DIN RAIL MODEL 2	INDUSTRIAL PC-2600 DIN RAIL MODEL 3
---------	-------------------------------------	-------------------------------------	-------------------------------------



Model			
Type	Industrial Fanless PC		
Processor and RAM	Intel Core i3-1115GRE UP3 2C/4T 2.2GHz (Turbo 3.9GHz) 15W TDP, 32GB Intel Core i7-1185GRE UP3 4C/8T 1.8GHz (Turbo 4.4GHz) 15W TDP, 32GB		Intel Atom x6413E 4C/4T 1.5GHz (Turbo 3GHz) 9W TDP, 32GB Intel Celeron J6412 4C/4T 2GHz (Turbo 2.6GHz) 10W TDP, 32GB
I/O	4 x Intel GbE (1 x I219LM and 3 x I210IT), 3 x USB 3.0, 2 x USB 2.0, 2 x RS232 / 422 / 482, 1 x HDMI, 1 x push-push Nano SIM slot (Internal M.2 Modem required), option for 4DI / 4DO	3 x Intel 2.5GbE (I225IT), 2 x USB 3.0, 4 x USB 2.0, 2 x RS232 / 422 / 485, 4 x HDMI, 1 x Push-push Nano SIM slot (Internal M.2 Modem required), option for 4DI / 4DO	3 x Intel GbE I210IT (x6413E CPU) or 3 x Intel GbE I211AT (J6412 CPU), 2 x USB 3.0, 3 x USB 2.0, 2 x RS232 / 422 / 485, 2 x HDMI, 1 x Push-push Nano SIM slot (Internal M.2 Modem required), option for 4DI / 4DO
Expansion	1 x M.2 B key type 3042 (PCIe x2 / USB 3.0) 1 x M.2 M key type 2242 (PCIe x4 / SATA)		1 x M.2 B key type 2242 / 3042 (PCIe x2 / USB 3.0) 1 x M.2 B key type 2242 (PCIe x2 / USB 2.0)
Operating System	Windows 10 / 11 Windows 10 IoT Enterprise Linux		
Storage	1 x M.2 B key type 3042 (PCIe x2 / USB 3.0) 1 x M.2 M key type 2242 (PCIe x4 / SATA), supports NVMe / SATA		1 x M.2 B key type 2242 / 3042 (PCIe x2 / USB 3.0) 1 x M.2 B key type 2242 (PCIe x2 / USB 2.0) supports NVMe only
Power Supply	DC-Jackor 2-pin input: +12V	DC-Jack or 2-pin input: Wide range +9 to 36V	DC-Jack or 2-pin input: Wide range +9 to 24V
Dimension and Weight	H 71.9 x W 141 x D 111.2mm. Net weight: 1.5kg / gross weight: 1.7kg		
Mounting	Wall / stand DIN RAIL		
Warranty and After Sales Support	Standard 1 year (option for 3 years)		

PRODUCT	HYGIENIC, WATERPROOF AND DUSTPROOF KEYBOARD
---------	---



Model	
Type	Hygienic, Waterproof and Dustproof Keyboard
Construction	Silicone
Ingress Protection	IP68
Number of Keys	106
Mouse function	Capacitive touchpad
Interface	USB
Dimension and Weight	H 11 x W 375 x D 150mm, app. 0.7kg
Warranty and After Sales Support	Standard 1 year (option for 3 years)

Contact our office



Michael Asmussen
Business Development
Manager

T: +45 4412 0383
Email: ma@blue-line.com



Helle Hveisel
Sales and Project
Coordinator

T: +45 8736 8741
Email: hh@blue-line.com



Jørgen Rübner
CTO / Partner

T: +45 4045 8721
Email: jr@blue-line.com

Contact us

Blue Line A/S
Kappa 8
8382 Hinnerup
Denmark

T: +45 8678 5000
Email: sales@blue-line.com
www.blue-line.com



Follow us on LinkedIn



BLUE LINE
IT for Demanding Environments