

High Pressure IP69K Waterproof HMI Panel PC 7700 Series



BLUE LINE
IT for Demanding Environments

Blue Line A/S | Kappa 8 | 8382 Hinnerup, Denmark
T +45 8678 5000 | www.blue-line.com

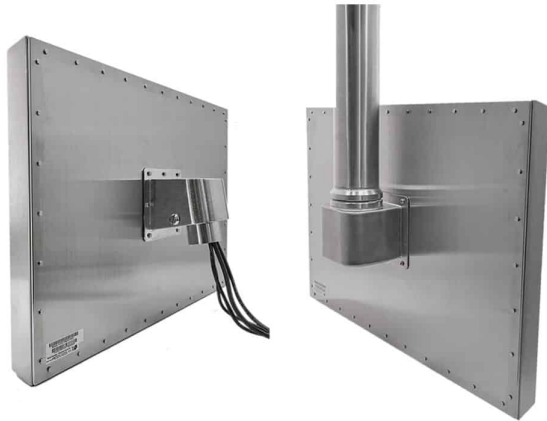
High Pressure IP69K Waterproof HMI Panel PC 7700 Series



BLUE LINE
IT for Demanding Environments

Blue Line A/S | Kappa 8 | 8382 Hinnerup, Denmark
T +45 8678 5000 | www.blue-line.com

High Pressure IP69K Waterproof HMI Panel PC 7700 Series



BLUE LINE
IT for Demanding Environments

Blue Line A/S | Kappa 8 | 8382 Hinnerup, Denmark
T +45 8678 5000 | www.blue-line.com

High Pressure IP69K Waterproof HMI Panel PC 7700 Series



Highlights

A waterproof stainless steel IP69K Panel PC developed for demanding food and beverage production. Withstands intensive spray down and high pressure cleaning over and over again. The fully sealed enclosure is IP66 dust and waterproof as well as IP69K high pressure proof that exceeds NEMA 4X rating enabling the market's fastest and most complete cleaning.

Designed for 24/7 operation, with low power consumption, passive cooling and without moving parts for maximum operational reliability. Screen sizes in 15.6" or 21.5" with auto-calibrated touch technology for seamless operation, even with gloves.

The rear side of the IP69K Panel PC supports tube and swingarm mounting with internal cable wiring providing the market's best long term protection against high pressure water treatment.

Benefit from our experience from numerous installations around the world. Let us prepare a proposal that ensures the best functionality, ergonomics and occupies as little space as possible, such as integration with food processing equipment.

Reduce cost and time spending with our global partner model based on your specific requirements. Let Blue Line take responsibility for delivery on time. Blue Line's ultimate goal is to help our customers get peace of mind by handling all relevant details such as securing the right configuration, software setup, mounting, packaging, labeling etc. Ask for references from your industry.

- Food / wet environment
- IP69K high pressure waterproof PC



BLUE LINE
IT for Demanding Environments

Blue Line A/S | Kappa 8 | 8382 Hinnerup, Denmark
T +45 8678 5000 | www.blue-line.com

High Pressure IP69K Waterproof HMI Panel PC 7700 Series

- Stainless steel AISI 316L
- 15.6" or 21.5" PCAP multi touch display
- Full HD resolution 1920 x 1080
- Touch on/off button on the side
- Integrated PC
- Intel 8th Gen. Core i3 / i5 / Pentium / Celeron
- Fanless operation
- ThinManager support
- Windows 10 / 11
- Optional tube mount and swivel arm with hidden connectors and cables

Specifications

Model Type

HMI stainless steel Panel PC

Construction

Fully sealed enclosure in acid resistant stainless steel AISI 316L

Cooling

Fanless

Ingress Protection

IP66/69K high pressure proof

Environment



BLUE LINE
IT for Demanding Environments

Blue Line A/S | Kappa 8 | 8382 Hinnerup, Denmark
T +45 8678 5000 | www.blue-line.com

High Pressure IP69K Waterproof HMI Panel PC 7700 Series

Operating temperature	0°C to +50°C (For 15.6" option for -20°C to +60°C)
Storage temperature	-30°C to +70°C
Humidity	10 to 90% @ +40°C, (non- condensing)

Certification

CE / FCC CLASS A

Display

15.6"	1920 x 1080, 16:9, FHD	color TFT LCD
21.5"	1920 x 1080, 16:9, FHD	color TFT LCD

Touch

Projected capacitive multi touch (supports gloves)
Optical bonding (optional)
Anti Shatter Film for projected capacitive multi touch (optional)

Brightness

15.6"	300 nits
21.5"	300 nits
All sizes	Option for high brightness 1000 nits

Colors

16.7M

Viewing Angle

160/160 - 178/178

Processor

Intel Pentium N4200 4C/4T 1.1GHz (Turbo 2.5GHz)
Intel Celeron J6412 4C/4T 2.0GHz (Turbo 2.6GHz)



BLUE LINE
IT for Demanding Environments

Blue Line A/S | Kappa 8 | 8382 Hinnerup, Denmark
T +45 8678 5000 | www.blue-line.com

High Pressure IP69K Waterproof HMI Panel PC 7700 Series

Intel 8th gen. Core i3-8145UE 2C/4T 2.2GHz (Turbo 3.9GHz)

Intel 8th gen. Core i5-8365UE 4C/8T 1.6GHz (Turbo 4.1GHz)

Chipset

Integrated SoC

RAM

Pentium N4200

Onboard 8GB DDR3L 1600MHz

Celeron J6412

1 x DDR4 SO-DIMM socket, max 32GB 3200MHz

8th Gen Core i3/i5

2 x DDR4 SO-DIMM socket, max 64GB 2400MHz

Storage

Pentium, Celeron & Core CPU

1 x 2.5" SATA HDD / SSD

Celeron

1 x M.2 B-Key 2242 SATA

Core

1 x M.2 B-Key 2280 SATA/PCIe

Rear Input / Output

2 x GbE RJ45 connectors (IP68)

1 x USB 2.0 connector (IP68)

1 x M12 3pin DC power (IP68)

1 x M4 ground screw

All connectors come with waterproof cap

Expansion

1 x Mini PCIe slot for WIFI/BT (optional)

Special Function

Touch on/off button on the side edge for hygienic cleaning

Operating System

Windows 10 / 11

Windows 10 / 11 IoT Enterprise



BLUE LINE
IT for Demanding Environments

Blue Line A/S | Kappa 8 | 8382 Hinnerup, Denmark
T +45 8678 5000 | www.blue-line.com

High Pressure IP69K Waterproof HMI Panel PC 7700 Series

Linux

Thin Client

ThinManager, Microsoft Remote Desktop (RPD), NoTouch OS, VNC, Citrix, VMware and others

Power Supply

+10V to +36V DC-in by M12 3-pin

Power Consumption

Max 35W

Mounting

VESA 100 (I/O ports in center)

Stainless steel supporting arm

Stainless steel tube mount

Dimension and Weight

15.6"	H 290 x W 440 x D 55mm	7.2kg
21.5"	H 362 x W 656 x D 55mm	10kg

Accessories Included

AC to DC power adapter with M12

Accessories Optional

USB cable, LAN cable, power cable

Stainless steel scanner bracket

Warranty and After Sales Support

Standard 1 year (option for 3 years)

Ordering Information

513



BLUE LINE
IT for Demanding Environments

Blue Line A/S | Kappa 8 | 8382 Hinnerup, Denmark
T +45 8678 5000 | www.blue-line.com