

High Pressure IP69K Waterproof HMI Monitor 7700 Series



BLUE LINE
IT for Demanding Environments

Blue Line A/S | Kappa 8 | 8382 Hinnerup, Denmark
T +45 8678 5000 | www.blue-line.com

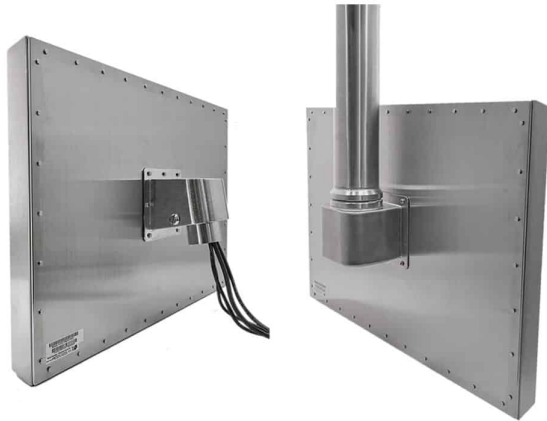
High Pressure IP69K Waterproof HMI Monitor 7700 Series



BLUE LINE
IT for Demanding Environments

Blue Line A/S | Kappa 8 | 8382 Hinnerup, Denmark
T +45 8678 5000 | www.blue-line.com

High Pressure IP69K Waterproof HMI Monitor 7700 Series



BLUE LINE
IT for Demanding Environments

Blue Line A/S | Kappa 8 | 8382 Hinnerup, Denmark
T +45 8678 5000 | www.blue-line.com

High Pressure IP69K Waterproof HMI Monitor 7700 Series



Highlights

A waterproof stainless steel IP69K Monitor developed for demanding food and beverage production. Withstands intensive spray down and high pressure cleaning over and over again. The fully sealed enclosure is IP66 dust and waterproof as well as IP69K high pressure proof that exceeds NEMA 4X rating enabling the market's fastest and most complete cleaning.

Designed for 24/7 operation, with low power consumption, passive cooling and without moving parts for maximum operational reliability. Screen sizes in 15.6" or 21.5" with auto-calibrated touch technology for seamless operation, even with gloves.

The rear side of the waterproof IP69K monitor supports tube and swingarm mounting with internal cable wiring providing the market's best long term protection against high pressure water treatment.

Benefit from our experience from numerous installations around the world. Let us prepare a proposal that ensures the best functionality, ergonomics and occupies as little space as possible, such as integration with food processing equipment.

Reduce cost and time spending with our global partner model based on your specific requirements. Let Blue Line take responsibility for delivery on time. Blue Line's ultimate goal is to help our customers get peace of mind by handling all relevant details such as securing the right configuration, software setup, mounting, packaging, labeling etc. Ask for references from your industry.

- Food / wet environment
- IP69K high pressure waterproof monitor



BLUE LINE
IT for Demanding Environments

Blue Line A/S | Kappa 8 | 8382 Hinnerup, Denmark
T +45 8678 5000 | www.blue-line.com

High Pressure IP69K Waterproof HMI Monitor 7700 Series

- Stainless steel AISI 316L
- 15.6" or 21.5" PCAP multi touch display
- Full HD resolution 1920 x 1080
- Touch on/off button on the side
- Fanless operation
- Optional tube mount and swivel arm with hidden connectors and cables

Specifications

Model Type

HMI stainless steel Monitor

Construction

Fully sealed enclosure in acid resistant stainless steel AISI 316L

Cooling

Fanless

Ingress Protection

IP66/69K high pressure proof

Environment

Operating temperature	0°C to +50°C
	(For 15.6" option for -20°C to +60°C)
Storage temperature	-30°C to +70°C
Humidity	10 to 90% @ +40°C, (non- condensing)

Certification



BLUE LINE
IT for Demanding Environments

Blue Line A/S | Kappa 8 | 8382 Hinnerup, Denmark
T +45 8678 5000 | www.blue-line.com

High Pressure IP69K Waterproof HMI Monitor 7700 Series

CE / FCC CLASS A

Display

15.6"	1920 x 1080, 16:9, FHD	color TFT LCD
21.5"	1920 x 1080, 16:9, FHD	color TFT LCD

Touch

Projected capacitive multi touch (supports gloves)
Anti Shatter Film for projected capacitive multi touch (optional)
Resistive touch (optional)
No touch (optional)
Optical bonding (optional)

Brightness

15.6"	300 nits
21.5"	300 nits
All sizes	Option for high brightness 1000 nits

Colors

16.7M

Viewing Angle

160/160 - 178/178

Rear Input / Output

1 x HDMI (IP68)
1 x 3pin DC power (IP68)
1 x USB-touch (IP68)
1 x M4 ground screw
All connectors come with waterproof cap

Power Supply



BLUE LINE
IT for Demanding Environments

Blue Line A/S | Kappa 8 | 8382 Hinnerup, Denmark
T +45 8678 5000 | www.blue-line.com

High Pressure IP69K Waterproof HMI Monitor 7700 Series

+9V to +36V DC-input

Power Consumption

Max 35W

Mounting

VESA 100 (I/O ports in center)

Stainless steel supporting arm

Stainless steel tube mount

Dimension and Weight

15.6"	H 290 x W 440 x D 55mm	6.5kg
21.5"	H 362 x W 571 x D 55mm	9.5kg

Special Function

Touch on/off button on the side edge for hygienic cleaning

Accessories Included

AC to DC power adapter with M12

Accessories Optional

USB cable, HDMI cable, Power cable

Stainless steel scanner bracket

Warranty and After Sales Support

Standard 1 year (option for 3 years)

Ordering Information

512



BLUE LINE
IT for Demanding Environments

Blue Line A/S | Kappa 8 | 8382 Hinnerup, Denmark
T +45 8678 5000 | www.blue-line.com