

Blue Line Open Frame Monitor



BLUE LINE
IT for Demanding Environments

Blue Line A/S | Kappa 8 | 8382 Hinnerup, Denmark
T +45 8678 5000 | www.blue-line.com

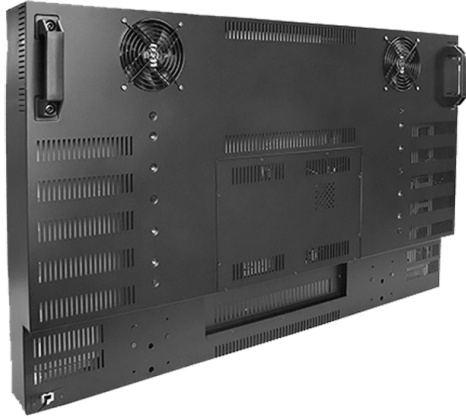
Blue Line Open Frame Monitor



BLUE LINE
IT for Demanding Environments

Blue Line A/S | Kappa 8 | 8382 Hinnerup, Denmark
T +45 8678 5000 | www.blue-line.com

Blue Line Open Frame Monitor



Highlights

Open frame monitor available in many sizes from 5.7" to 85" in different resolutions and aspect ratios. Integration in-wall or rear mount. Suitable for many industries and customisable according to application and environment.

Projected capacitive touch can be operated with gloves. True flat front easy to clean.

Reduce cost and time spending with our global partner model based on your specific requirements. Let Blue Line take responsibility for delivery on time. Blue Line's ultimate goal is to help our customers get peace of mind by handling all relevant details such as securing the right configuration, software setup, mounting, packaging, labeling etc. Ask for references from your industry.



BLUE LINE
IT for Demanding Environments

Blue Line A/S | Kappa 8 | 8382 Hinnerup, Denmark
T +45 8678 5000 | www.blue-line.com

Blue Line Open Frame Monitor

- Open frame monitor 5.7" to 85"
- Different resolutions and aspect ratios available
- Resolution up to 3840 x 2140 ultra HD
- In-wall or rear mount for integration
- With or without touch
- Resistive or PCAP multi touch (supports gloves)
- True flat front easy to clean
- IP65 front
- Large range of options
- Customisation according to your requirements

Specifications

Model Type

Open frame monitor

Construction

Glass front - metal rear housing

Cooling

Fanless from 5.7" to 27"

Active fan from 32" to 85"

Ingress Protection

Front IP65 with front folie sealing

Environment

Operating temperature

0°C to +50°C



BLUE LINE
IT for Demanding Environments

Blue Line A/S | Kappa 8 | 8382 Hinnerup, Denmark
T +45 8678 5000 | www.blue-line.com

Blue Line Open Frame Monitor

Storage temperature

-20°C to +60°C

Humidity

10% to 90% (non-condensing)

Certification

CE

Display

True flat front

Sizes from 5.7" to 85"

Resolution from 640 x 480 and up to 3840 x 2160 ultra HD

Aspect ratio 4:3 / 5:3 / 5:4 / 16:9 / 16:10

Touch

Projected capacitive multi touch (support gloves)

Resistive touch from 5.7" up to 24" (optional)

Without touch (optional)

Optical bonding (optional)

Brightness

200 to 450 nits

Option for high brightness 1000 to 1500 nits

Rear Input / Output

1 x VGA

Option for HDMI / display port / DVI

1 x USB 2.0 touch

OSD control panel

1 x power input

Power Supply

AC input or DC input

Mounting



BLUE LINE
IT for Demanding Environments

Blue Line A/S | Kappa 8 | 8382 Hinnerup, Denmark
T +45 8678 5000 | www.blue-line.com

Blue Line Open Frame Monitor

In-wall / rear mount

Warranty and After Sales Support

Standard 1 year (option for 3 years)



BLUE LINE
IT for Demanding Environments

Blue Line A/S | Kappa 8 | 8382 Hinnerup, Denmark
T +45 8678 5000 | www.blue-line.com