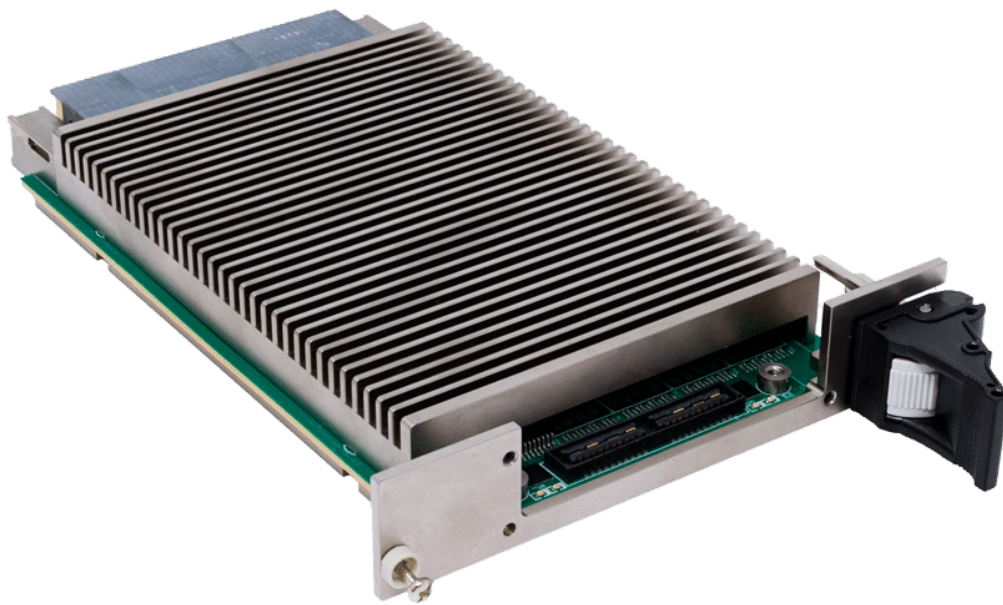


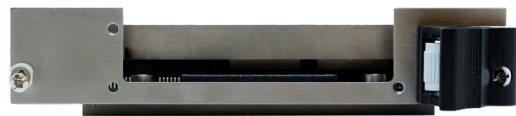
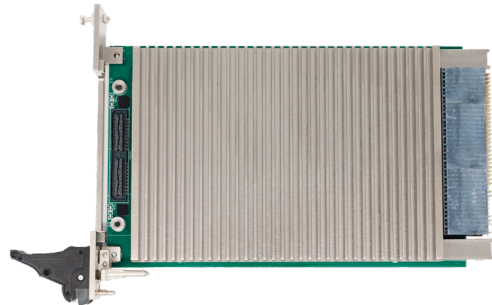
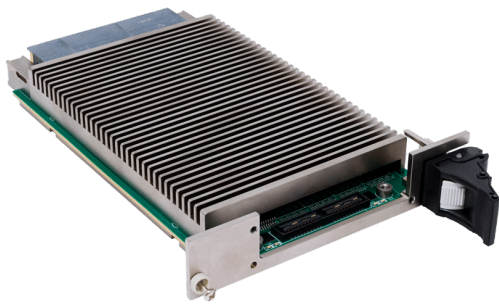
Blue Line 3U VPX Defense Switch FR-352



BLUE LINE
IT for Demanding Environments

Blue Line A/S | Kappa 8 | 8382 Hinnerup, Denmark
T +45 8678 5000 | www.blue-line.com

Blue Line 3U VPX Defense Switch FR-352



Highlights

The Blue Line 3U VPX Defense Switch FR-352 is a state-of-the-art 3U VPX™ layer 2/3 Ethernet switch, engineered to comply with SOSA™ alignment standards. This high-performance switch offers flexible connectivity with 10G Ethernet ports, configurable as either 10G-Base-T or 10G-Base-KR. It delivers impressive performance with up to 480 Gbps non-blocking throughput and features a low-latency design for optimal efficiency. The switch comes equipped with advanced management software that provides extensive configuration options, including support for virtualization and quality of service.



BLUE LINE
IT for Demanding Environments

Blue Line A/S | Kappa 8 | 8382 Hinnerup, Denmark
T +45 8678 5000 | www.blue-line.com

Blue Line 3U VPX Defense Switch FR-352

Designed specifically for defense applications, the FR-352 provides a robust, reliable, and versatile networking solution. Its SOSA™ alignment ensures seamless interoperability and easy integration into existing systems, making it an ideal choice for demanding defense environments.

Reduce cost and time spending with our global partner model based on your specific requirements. Let Blue Line take responsibility for delivery on time. Blue Line's ultimate goal is to help our customers get peace of mind by handling all relevant details such as securing the right configuration, software setup, mounting, packaging, labeling, etc. Ask for references from your industry.

- 10G Rugged Ethernet Switch
- VPX SOSA Aligned
- 48 channels of 10 GbE interfaces
- Line rate forwarding up to 480 Gbps
- Configurable for multiple backplane pinouts and profiles
- Highly managed multi-layer switching services including multicast, QoS, and security features
- Precision Time Protocol (IEEE 1588v1/v2) support
- Shock: VITA 47 Class OS2, 40g
- Vibration: VITA 47 Class V3, 0.1g²/Hz
- Customization according to your requirements

Specifications

Model Type

3U VPX Rugged Ethernet Switch

Form Factor

3U VPX

Cooling

Air cooled

Conduction cooled



BLUE LINE
IT for Demanding Environments

Blue Line A/S | Kappa 8 | 8382 Hinnerup, Denmark
T +45 8678 5000 | www.blue-line.com

Blue Line 3U VPX Defense Switch FR-352

Environment

Air cooled	0°C to +55°C(N-series), -25°C to +70°C(E-series)
Conduction cooled	-40°C to +85°C, Operating Altitude 1,000 to 50,000 feet(-305 to 15,240 meters)
Humidity	5% - 95% RH (non-condensing)

Input / Output

24 x 10GBASE-KR backplane connections
4 x 1000BASE-T Connections

Special Function

Top I/O: 8 x 10GBASE-KR or 2 x 40GBASDE-KR4, 4x 10GBASE-T, IEEE1588v1/v2

Management Software

Highly managed multi-layer switching services including multicast, QoS, and security features

Power Consumption

+5V @ 5.3A, +3.3V @ 2.8A (Voltage +5% / -2%)

Dimension and Weight

Dimension	100mm x 160mm (VITA 46.0,VITA 48.0)
-----------	-------------------------------------

Warranty and After Sales Support

Standard 1 year (option for 3 years)



BLUE LINE
IT for Demanding Environments

Blue Line A/S | Kappa 8 | 8382 Hinnerup, Denmark
T +45 8678 5000 | www.blue-line.com